

**The Corporation of the
CITY OF WHITE ROCK
BYLAW 2467**



A Bylaw to amend the
"White Rock Zoning Bylaw, 2012, No. 2000" as amended

The CITY COUNCIL of the Corporation of the City of White Rock, in open meeting assembled, ENACTS as follows:

1. Schedule "C" of the "White Rock Zoning Bylaw, 2012, No. 2000" as amended is further amended by rezoning the western approximately 1.75 acres of the following lands:

Lot 1 Section 10 Township 1 New Westminster District Plan EPP25563
PID: 029-076-234
(1454 Oxford Street)

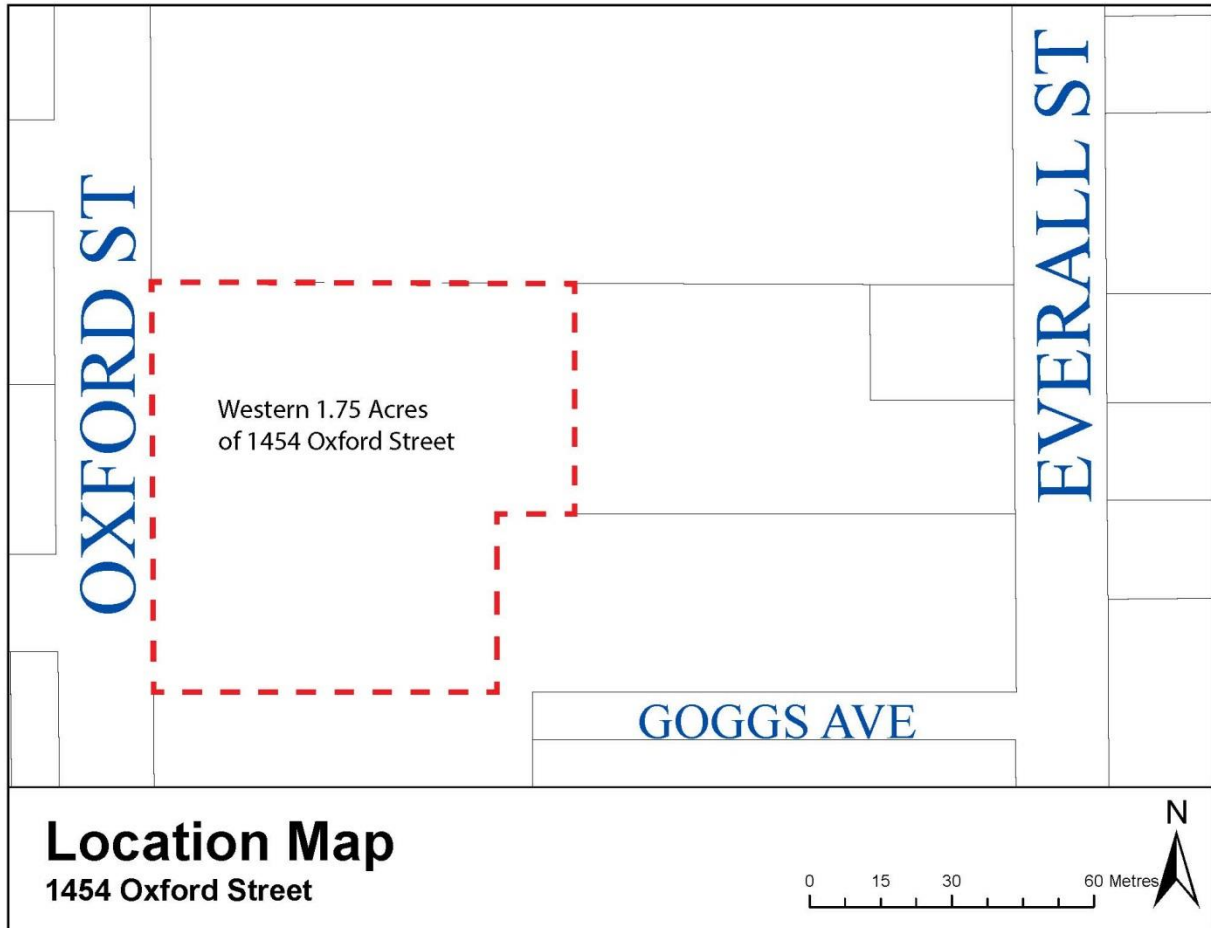
as shown on Schedule "1" attached hereto, from the 'P-1 Civic/Institutional Use Zone' to the 'CD-46 Comprehensive Development Zone'.
2. The "White Rock Zoning Bylaw, 2012, No. 2000" as amended is further amended:
 - (1) by adding to the Table of Contents for 'Schedule "B" (Comprehensive Development Zones)', Section '7.46 CD-46 Comprehensive Development Zone (1454 Oxford Street)'; and
 - (2) by adding the attached Schedule "2" to 'Schedule B (Comprehensive Development Zones)' as Section '7.46 CD-46 Comprehensive Development Zone'.
3. This Bylaw may be cited for all purposes as the "White Rock Zoning Bylaw, 2012, No. 2000, Amendment (CD-46 – 1454 Oxford Street) Bylaw, 2023, No. 2467".

PUBLIC INFORMATION MEETING on the	day of
RECEIVED FIRST READING on the	day of
RECEIVED SECOND READING on the	day of
PUBLIC HEARING held on the	day of
RECEIVED THIRD READING on the	day of
RECONSIDERED AND FINALLY ADOPTED on the	day of

Mayor

City Clerk

SCHEDULE "1"



SCHEDULE “2”

7.46 CD-46 COMPREHENSIVE DEVELOPMENT ZONE

INTENT

The intent of this zone is to accommodate a 121-unit residential development on a site of approximately 7,090 square metres (1.75 acres) in area.

1. Permitted Uses:
 - (a) *multi-unit residential use*
 - (b) *accessory home occupation* use in accordance with the provisions of 5.3 and that does not involve clients directly accessing the *building*
2. Lot Coverage:
 - (a) Maximum *lot coverage* shall not exceed 36%
3. Density:
 - (a) Maximum *gross floor area* shall not exceed 32,522 square metres (350,060ft²)
 - (b) Maximum *residential floor area* shall not exceed 27,607 square metres (297,156ft²)
 - (c) Maximum number of *dwelling units* shall not exceed 203
4. Building Height:
 - (a) Tower A (shown on attached Plans) shall not exceed a *height* of 159.5 metres geodetic
 - (b) Tower B (shown on attached Plans) shall not exceed a *height* of 170.5 metres geodetic
 - (c) Section 4.13.4 does not apply to the CD-46 Zone
5. Siting Requirements:
 - (a) Minimum setbacks are as follows:

(i) Setback for buildings from front (west) lot line	= 14.8 metres
(ii) Setback for balconies from front (west) lot line	= 11.8 metres
(iii) Setback for buildings from rear (east) lot line	= 19.5 metres
(iv) Setback for buildings from north interior side lot line	= 6.1 metres
(v) Setback for slab extensions from north interior side lot line	= 3.9 metres
(vi) Setback for buildings from south interior side lot line	= 4.3 metres
(vii) Setback for balconies from south interior side lot line	= 1.2 metres
(viii) Setback for buildings from other interior side lot lines	= 3.0 metres
(ix) Setback for slab extensions from other interior side lot lines	= 0.3 metres
 - (b) Stair accesses to the underground parking shall be sited as shown on the attached Plans
6. Parking:

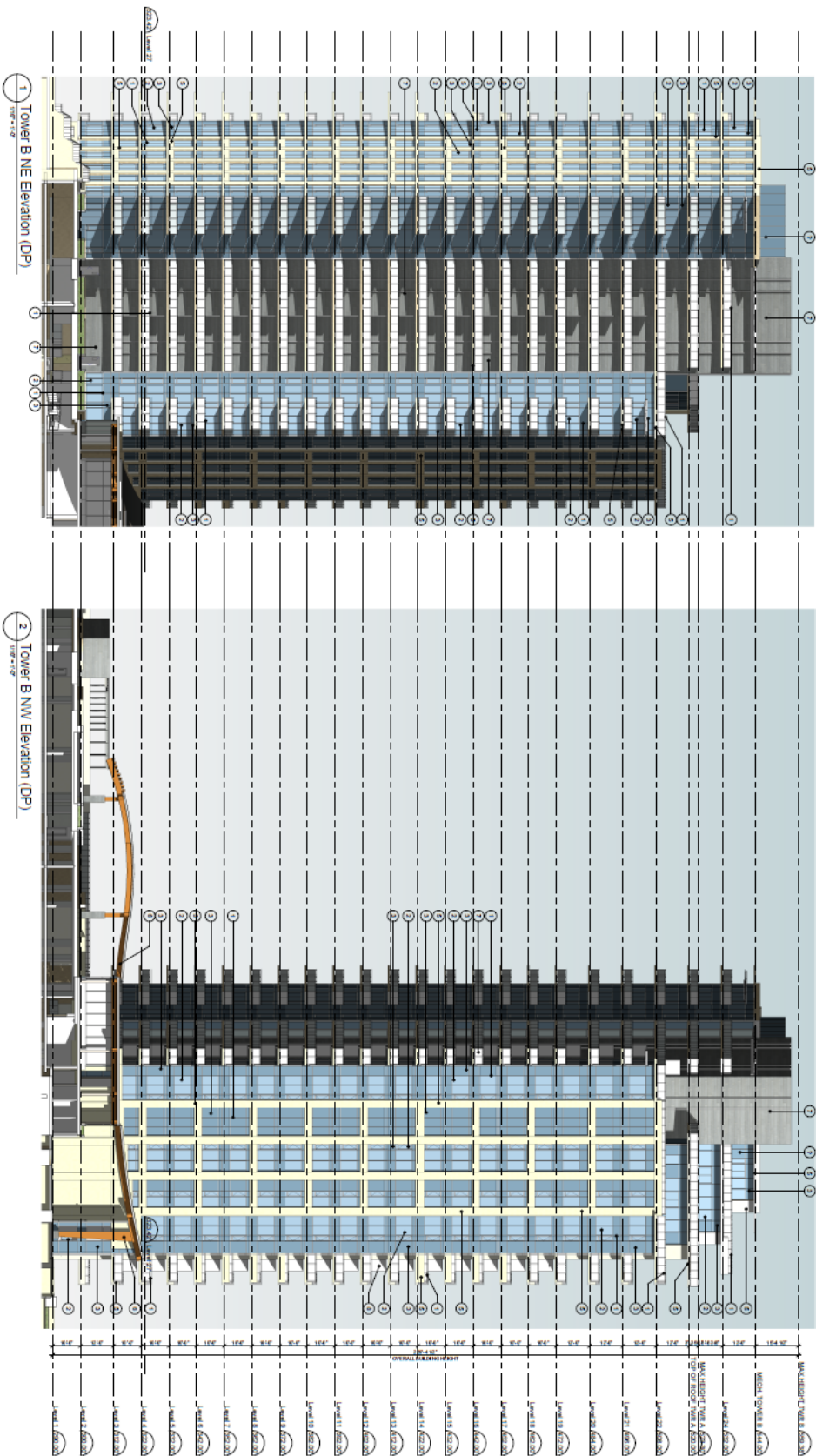
Parking shall be provided in accordance with Section 4.14, with a total minimum of four hundred (400) parking spaces to be provided as follows:

 - (a) A minimum of forty (40) visitor spaces are to be provided and marked as ‘visitor parking’
 - (b) A minimum of three hundred and sixty (360) spaces shall be provided to serve the residential units
 - (c) A minimum of six (6) spaces shall be provided for disabled persons parking and shall be clearly marked as per BC Building Code requirements
7. Loading:
 - (a) Two (2) loading zones shall be provided in accordance with Section 4.15

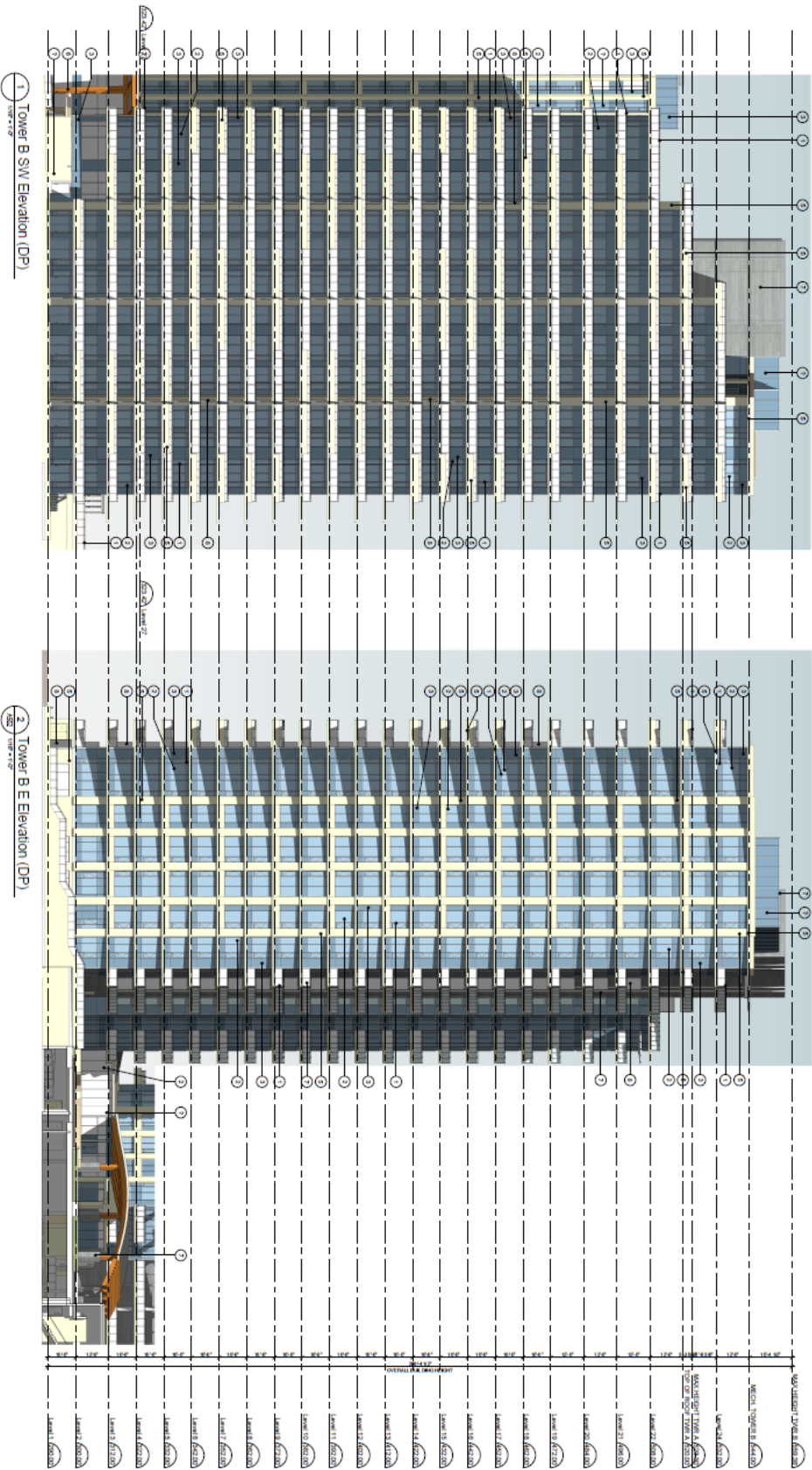
8. Bicycle Parking:
 - (a) A minimum of one hundred and twenty-two (122) Class I bicycle parking spaces shall be provided, in accordance with Section 4.16
 - (b) A minimum of twenty-five (25) Class II bicycle parking spaces shall be provided, in accordance with Section 4.16
9. General:
 - (a) Development in this zone shall substantially conform to the Plans prepared by Chris Dikeakos Architects Inc. and dated October 27, 2015, that are attached hereto and on file at the City of White Rock



NAUTILUS ELEVATIONS			
1	NAUTILUS TOWER B NE ELEVATION (DP)	2	NAUTILUS TOWER B NW ELEVATION (DP)
3	NAUTILUS TOWER C NE ELEVATION (DP)	4	NAUTILUS TOWER C NW ELEVATION (DP)
5	NAUTILUS TOWER D NE ELEVATION (DP)	6	NAUTILUS TOWER D NW ELEVATION (DP)
7	NAUTILUS TOWER E NE ELEVATION (DP)	8	NAUTILUS TOWER E NW ELEVATION (DP)
9	NAUTILUS TOWER F NE ELEVATION (DP)	10	NAUTILUS TOWER F NW ELEVATION (DP)
11	NAUTILUS TOWER G NE ELEVATION (DP)	12	NAUTILUS TOWER G NW ELEVATION (DP)
13	NAUTILUS TOWER H NE ELEVATION (DP)	14	NAUTILUS TOWER H NW ELEVATION (DP)
15	NAUTILUS TOWER I NE ELEVATION (DP)	16	NAUTILUS TOWER I NW ELEVATION (DP)
17	NAUTILUS TOWER J NE ELEVATION (DP)	18	NAUTILUS TOWER J NW ELEVATION (DP)
19	NAUTILUS TOWER K NE ELEVATION (DP)	20	NAUTILUS TOWER K NW ELEVATION (DP)
21	NAUTILUS TOWER L NE ELEVATION (DP)	22	NAUTILUS TOWER L NW ELEVATION (DP)
23	NAUTILUS TOWER M NE ELEVATION (DP)	24	NAUTILUS TOWER M NW ELEVATION (DP)
25	NAUTILUS TOWER N NE ELEVATION (DP)	26	NAUTILUS TOWER N NW ELEVATION (DP)
27	NAUTILUS TOWER O NE ELEVATION (DP)	28	NAUTILUS TOWER O NW ELEVATION (DP)
29	NAUTILUS TOWER P NE ELEVATION (DP)	30	NAUTILUS TOWER P NW ELEVATION (DP)
31	NAUTILUS TOWER Q NE ELEVATION (DP)	32	NAUTILUS TOWER Q NW ELEVATION (DP)
33	NAUTILUS TOWER R NE ELEVATION (DP)	34	NAUTILUS TOWER R NW ELEVATION (DP)
35	NAUTILUS TOWER S NE ELEVATION (DP)	36	NAUTILUS TOWER S NW ELEVATION (DP)
37	NAUTILUS TOWER T NE ELEVATION (DP)	38	NAUTILUS TOWER T NW ELEVATION (DP)
39	NAUTILUS TOWER U NE ELEVATION (DP)	40	NAUTILUS TOWER U NW ELEVATION (DP)
41	NAUTILUS TOWER V NE ELEVATION (DP)	42	NAUTILUS TOWER V NW ELEVATION (DP)
43	NAUTILUS TOWER W NE ELEVATION (DP)	44	NAUTILUS TOWER W NW ELEVATION (DP)
45	NAUTILUS TOWER X NE ELEVATION (DP)	46	NAUTILUS TOWER X NW ELEVATION (DP)
47	NAUTILUS TOWER Y NE ELEVATION (DP)	48	NAUTILUS TOWER Y NW ELEVATION (DP)
49	NAUTILUS TOWER Z NE ELEVATION (DP)	50	NAUTILUS TOWER Z NW ELEVATION (DP)



MATRICAL LEGEND			
1	REVISIONS	2	REVISIONS
3	REVISIONS	4	REVISIONS
5	REVISIONS	6	REVISIONS
7	REVISIONS	8	REVISIONS
9	REVISIONS	10	REVISIONS
11	REVISIONS	12	REVISIONS
13	REVISIONS	14	REVISIONS
15	REVISIONS	16	REVISIONS
17	REVISIONS	18	REVISIONS
19	REVISIONS	20	REVISIONS
21	REVISIONS	22	REVISIONS
23	REVISIONS	24	REVISIONS
25	REVISIONS	26	REVISIONS
27	REVISIONS	28	REVISIONS
29	REVISIONS	30	REVISIONS
31	REVISIONS	32	REVISIONS
33	REVISIONS	34	REVISIONS
35	REVISIONS	36	REVISIONS
37	REVISIONS	38	REVISIONS
39	REVISIONS	40	REVISIONS
41	REVISIONS	42	REVISIONS
43	REVISIONS	44	REVISIONS
45	REVISIONS	46	REVISIONS
47	REVISIONS	48	REVISIONS
49	REVISIONS	50	REVISIONS
51	REVISIONS	52	REVISIONS
53	REVISIONS	54	REVISIONS
55	REVISIONS	56	REVISIONS
57	REVISIONS	58	REVISIONS
59	REVISIONS	60	REVISIONS
61	REVISIONS	62	REVISIONS
63	REVISIONS	64	REVISIONS
65	REVISIONS	66	REVISIONS
67	REVISIONS	68	REVISIONS
69	REVISIONS	70	REVISIONS
71	REVISIONS	72	REVISIONS
73	REVISIONS	74	REVISIONS
75	REVISIONS	76	REVISIONS
77	REVISIONS	78	REVISIONS
79	REVISIONS	80	REVISIONS
81	REVISIONS	82	REVISIONS
83	REVISIONS	84	REVISIONS
85	REVISIONS	86	REVISIONS
87	REVISIONS	88	REVISIONS
89	REVISIONS	90	REVISIONS
91	REVISIONS	92	REVISIONS
93	REVISIONS	94	REVISIONS
95	REVISIONS	96	REVISIONS
97	REVISIONS	98	REVISIONS
99	REVISIONS	100	REVISIONS

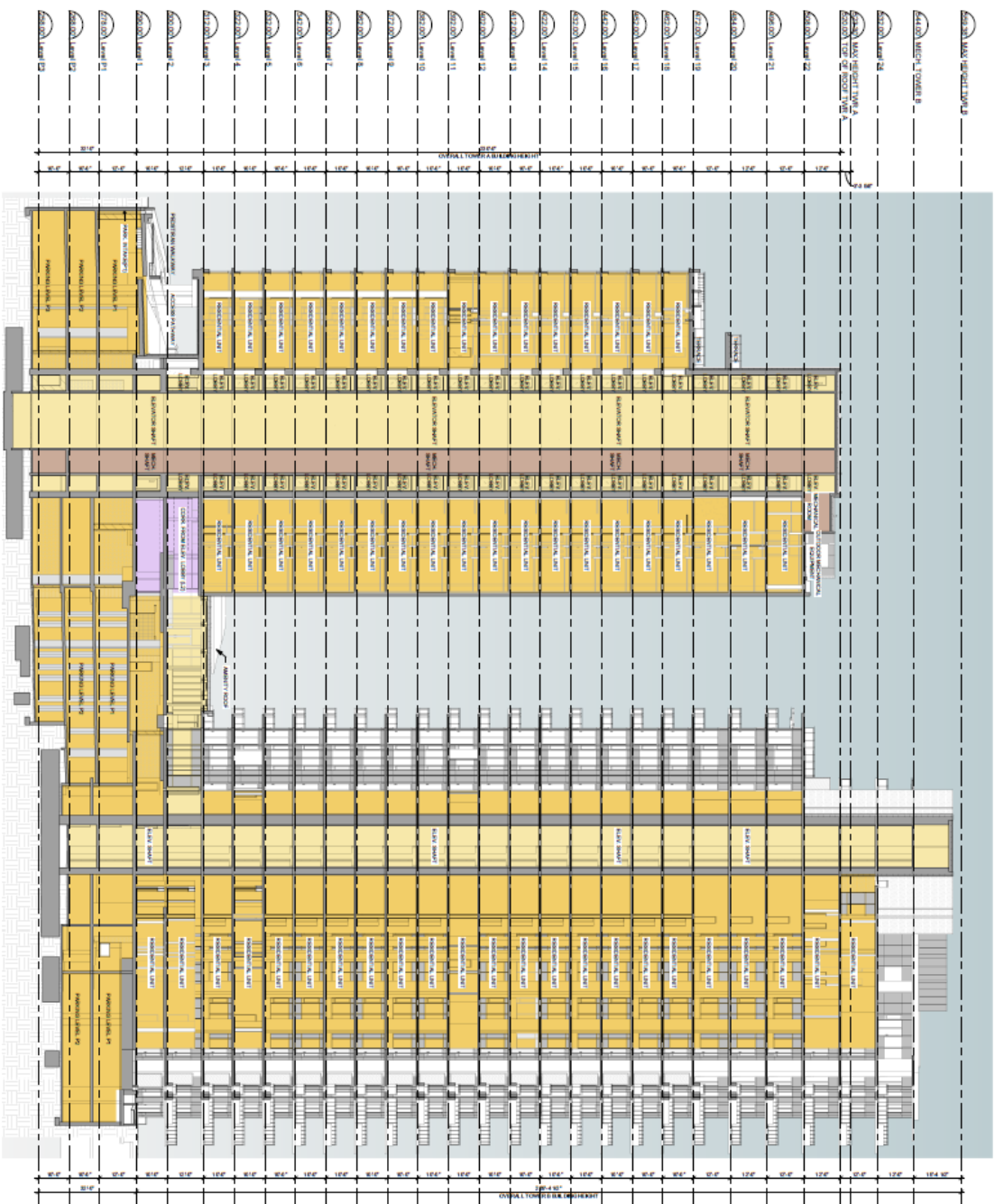


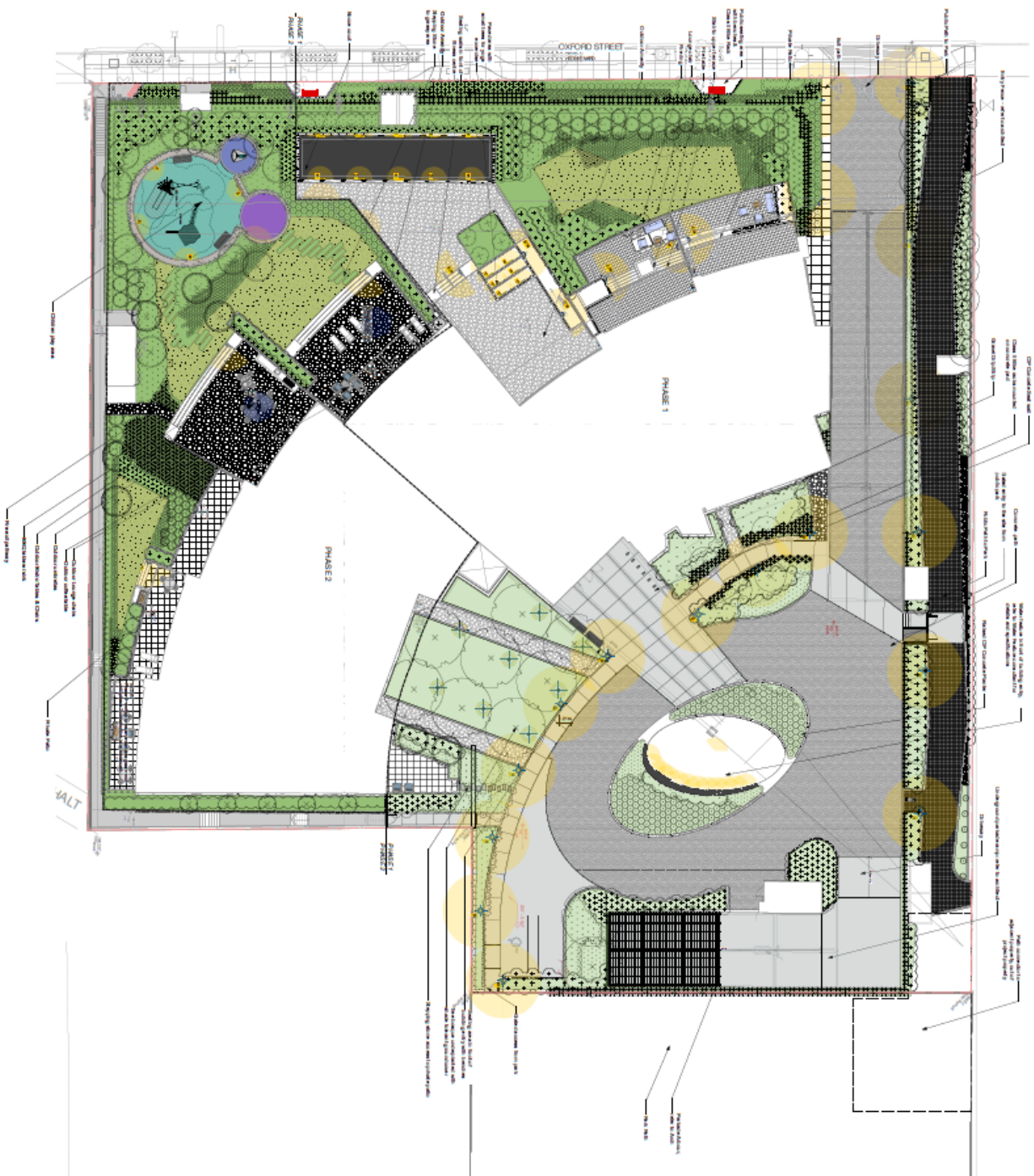
NAUTILUS
1454 Oxford Street, White Rock, BC

S-W & EAST ELEV. (BUILDING B)
SCALE: 1/16" = 1'-0"

RE-ISSUED FOR OCP, REZONING & DP
SEPTEMBER 20, 2022

ION
Ile of Mann
Property Group
A-303





Project Name: Nautilus
Project Number: 2021-001

Client: Nautilus
Project Manager: [Name]
Project Number: 2021-001

Project Name: Nautilus

Project Name: Nautilus
Project Number: 2021-001

Project Name: Nautilus
Project Number: 2021-001

Project Name: Nautilus
Project Number: 2021-001

Project Name	Project Number
Nautilus	2021-001
Project Manager	[Name]
Project Number	2021-001
Project Name	Nautilus
Project Number	2021-001