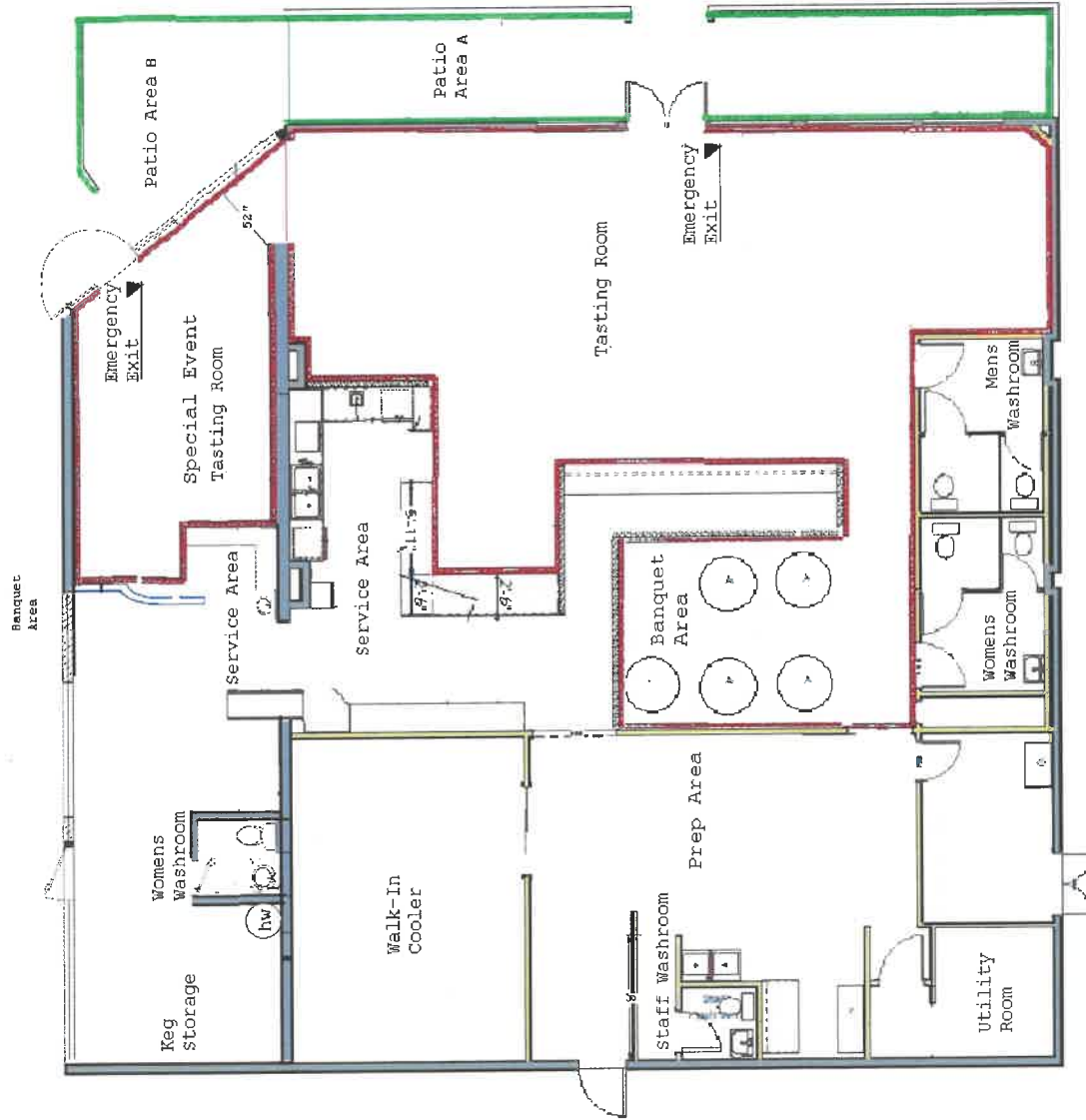




1515 Johnston Rd. White Rock
Taps on Johnston General Layout

Parking Requirements per Zoning Bylaw 4.14.1
 Commercial restaurant or Licensed Establishment
 1 space per 8 seats
 Required = 19 spaces
 Provided = 47 spaces



Taps on Johnston - A2 Assembly

1515A Johnston - Main Tasting Room Total Gross Floor Space Inc. Washrooms & Storage
 Original brewery & tasting room - 3032 sq. ft. / 281 m2
 Net floor area brewery = 923 sq. ft. / 85.75 m2
 Net floor area tasting room = 1671.25 sq. ft. / 155.26 m2
 Total net floor area = 2594.25

1515B Johnston - Special Event Total Gross Floor Space Inc. Washrooms & Storage:

Special Event floor area - 790 sq. ft. / 73.4 m2
 Net floor area storage = 492 sq. ft. / 45.7 m2
 Net floor area tasting room = 230 sq. ft. / 21.2 m2
 Total net floor area = 742 sq. ft. / 68.9 m2

Exterior Patio Expansion Calculations

1515 A Johnston Original Patio Area = 395.5 sq. ft. / 31.17 m2
 1515 B Johnston New Expansion Patio = 125 sq. ft. / 11.61 m2
 Total net patio area = 460.5 sq. ft. / 42.7 m2

Total Area Occupant Loads

Banquet Area - 85.75 m2 / 4.6 m2 per person = 18 occupants (Staff)
 Tasting Room Area - 155.26 m2 / 1.2 m2 per person = 129 occupant
 Special Event - 23.2 m2 / 1.2 m2 per person = 19 occupants
 Total Interior Occupant Load = 166 Occupants
 Outdoor Patio Area - 42.7 m2 / 0.95 m2 per person = 44 occupants
 Total Occupant Load = 210 Occupants

3.7. Health Requirements

Required: _____ Provided: _____

3.7.2.2 Water Closets

Table 3.7.2.2-A Water Closets for an Assembly Occupancy Forming Part of Sentence 3.7.2.2.(6)

Number of Persons of Each Sex - Minimum Number of Water Closets

	Male	Female
1 - 25	1	1
26 - 50	1	2
51 - 75	2	3
76 - 100	2	4
101 - 125	3	5
126 - 150	3	6
151 - 175	4	7
176 - 200	4	8

Water Closets Provided

Male - 2 Female - 3 Staff (Universal) - 1 Total = 6

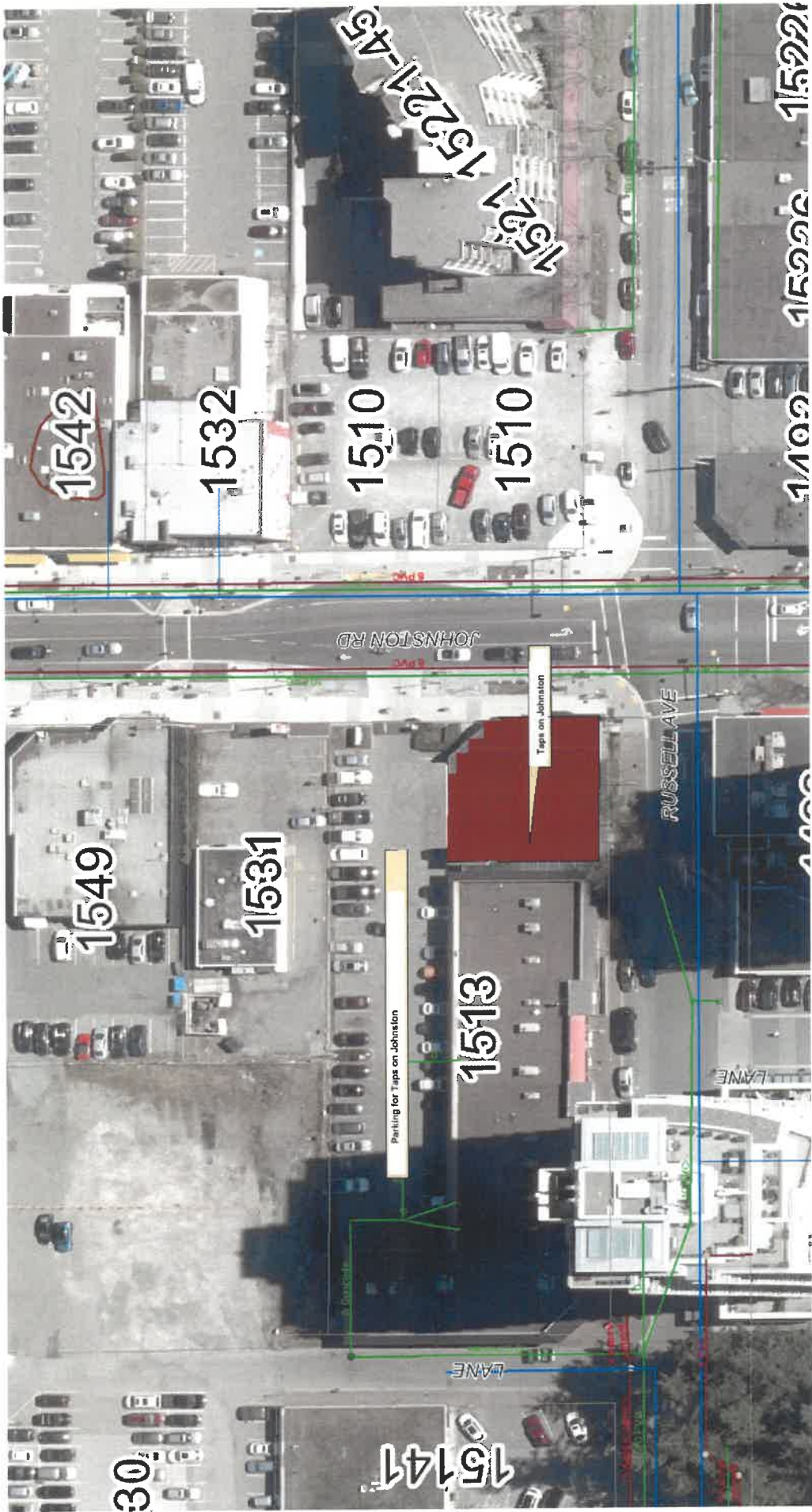
Total occupancy based on health requirements

Male - 75
 Female - 75
 Staff (universal) - 30
 Total (all areas) = 160 Occupants

Total Occupants based on Fire Exit requirements

No of Fire Exits = 2
 Total Fire Exit Width = 2 @ 900 mm ea. = 1800mm / 6.1 mm per occupant
 Total Fire Exit Width Occupant Load - 295 Occupants
 Occupancy F2/A2 Non Alarmed - <150 Occupants

Maximum occupancy is based on the lowest maximum calculation = 149 total occupancy



1542

1532

1510

1510

1402

1522

15221

JOHNSTON RD

RUSSELL AVE

LANE

LANE

1549

1531

15113

Parking for Taps on Johnston

Taps on Johnston

Downpipes

30

15141