

**\*Live Streaming/Telecast:** Please note that Standing Committees, Council Meetings, and Public Hearings held in the Council Chamber are being recorded and broadcasted as well included on the City's website at: [www.whiterockcity.ca](http://www.whiterockcity.ca)

Corporate Administration  
E-mail

(604) 541-2212  
[clerksoffice@whiterockcity.ca](mailto:clerksoffice@whiterockcity.ca)

THE CORPORATION OF THE  
**CITY OF WHITE ROCK**  
15322 BUENA VISTA AVENUE, WHITE ROCK, B.C. V4B 1Y6



**ON TABLE** see page 2

December 5, 2019

A **SPECIAL GOVERNANCE AND LEGISLATION COMMITTEE MEETING** will be held in the **CITY HALL COUNCIL CHAMBERS** located at **15322 Buena Vista Avenue, White Rock, BC**, on **DECEMBER 11, 2019** to begin at **4:00 p.m.** for the transaction of business as listed below.

T. Arthur, Director of Corporate Administration

## **A G E N D A**

**Councillor Fathers, Chairperson**

**1. CALL MEETING TO ORDER**

**2. ADOPTION OF AGENDA**

**RECOMMENDATION**

THAT the Governance and Legislation Committee adopt the agenda for December 11, 2019 as circulated.

**3. RCMP I-TEAMS PRESENTATION**

The following members of the RCMP Lower Mainland Integrated Teams (I-Teams) to provide a presentation regarding the Integrated Teams (I-Teams), and their role of support for the City of White Rock:

- Chief Superintendent Brian Edwards - Officer in Charge of Integrated Teams (OIC, I-Teams)
- Staff Sergeant Joel Leblanc - Non Commissioned Officer in Charge of Integrated Police Dog Services (NCO i/c IPDS)
- Inspector Shawna McPherson - Officer in Charge Integrated Forensic Identification Services (OIC, IFIS)
- Inspector Andy LeClair - Officer in Charge Emergency Response Team (OIC, ERT)
- Staff Sergeant Dave Jewers - Non Commissioned Officer in Charge of Integrated Collision Analysts Reconstruction Services (NCO i/c ICARS)
- Superintendent Dave Chauhan - Officer in Charge Integrated Homicide Investigation Team (OIC, IHIT)

**4. CONCLUSION OF THE DECEMBER 11, 2019 GOVERNANCE AND LEGISLATION COMMITTEE MEETING**



# Lower Mainland District Integrated Teams

## City of White Rock I-TEAMS Service Delivery

Chief Superintendent Brian Edwards, Officer-in-Charge LMD Integrated Teams, IHIT  
Superintendent Dave Chauhan, ERT Inspector Andy LeClair, IFIS Inspector Shawna  
McPherson, IPDS Staff Sergeant Joel LeBlanc, ICARS Staff Sergeant Dave Jewers  
December 11, 2019



# Integrated Teams History

- 2000 - RCMP initiated the BC Policing Study
- RCMP & Mayor's Consultative Forum created The Lower Mainland Policing Advisory Committee (LMPAC)
- Each Municipality appointed a Primary Police Contact & RCMP contact
- Eventual goal was to create jurisdictional & operational effectiveness, economies of scale in the LMD



- 2001 - Solicitor General Rich Coleman writes RCMP requesting LMD Integration Plan
- 2003 - Integration begins with IHIT



# Integrated Teams Across the LMD

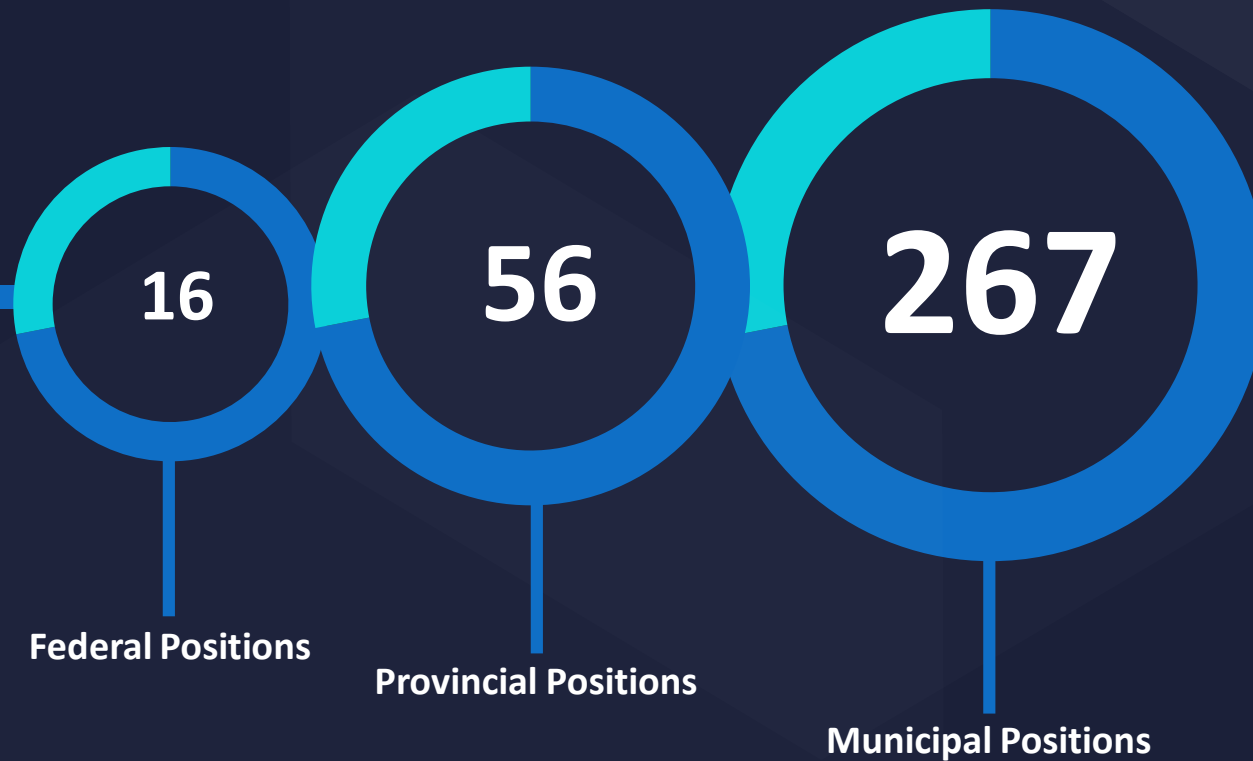
- 339 people
- 28 RCMP, 5 municipal and 40 Indigenous communities served
- Takes years to build up to appropriate level of expertise to conduct highly-specialized investigations/high-risk response

- **Abbotsford:** IHIT, IPDS
- **Delta:** IPDS, LMD ERT
- **New Westminister:** IPDS, IHIT, LMD ERT
- **Port Moody:** IPDS, IHIT, LMD ERT
- **West Vancouver:** IHIT, ICARS, IFIS



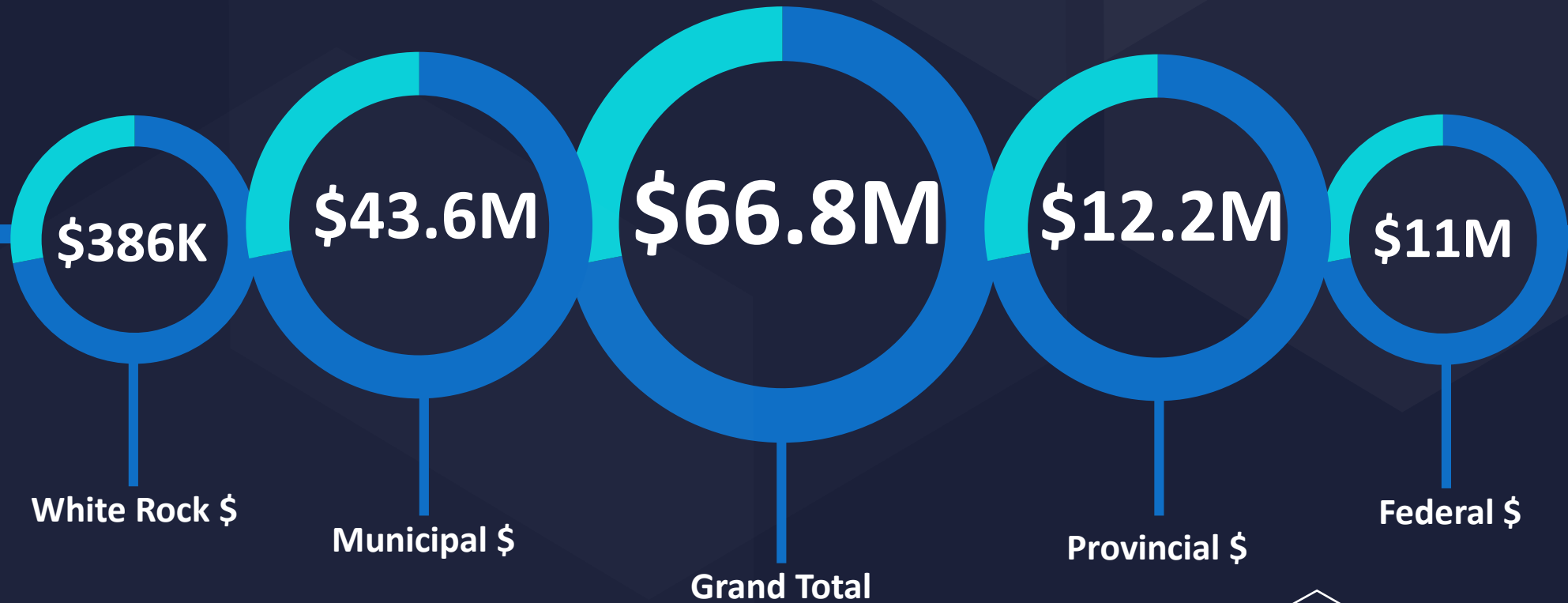


# I-TEAMS – Positions by Partner Group



**Positions by partner group:**  
Municipal funding: 267 (79%)  
Provincial funding: 56 (16%)  
Federal funding: 16 (5%)  
**Total: 339 positions**

# I-TEAMS – Where does the money come from?



# I-TEAMS Calls for Service across the LMD



I-TEAMS responded to **18,065** calls for service throughout the Lower Mainland in 2018/2019



# I-TEAMS Five-year financial plan

2019/20	2020/21	2021/22	2022/23	2023/24
\$65,954,352	\$68,463,757	\$70,860,722	\$73,196,690	\$75,574,056
2.31%	3.8%	3.5%	3.3%	3.25%



# I-TEAMS

## Looking to the Future

**Key Theme** – Enhance stakeholder and public engagement





**Number of dog teams:  
48 in the LMD**

**Patrol Hours:  
47,705**

**Crime Reduction Hours:  
18,834**

**Calls for Service:  
11,703**

# Integrated Police Dog Service **IPDS**

**Largest Dog Team:** Lower Mainland District Integrated Police Dog Service is the largest such team in Canada.

**Patrol and Crime Reduction:** When not responding to dog calls, teams proactively patrol and through consultation with detachments, target crime hot spots in communities.

**Administrative offices** are centrally located in Surrey, but teams are strategically placed throughout the LMD to ensure quick response 24/7.





# Integrated Police Dog Service **IPDS**

**IPDS covers** an area that is nearly 31,000 square kilometres. It serves 13 detachments in 28 RCMP-policed communities and 4 municipally-policed communities including Delta, Port Moody, New Westminster and Abbotsford

**Teams are divided** into four geographic areas to optimize coverage throughout the region

**IPDS dedication:** It takes 750 hours of training equal to a five-year commitment before you can qualify to get into the program

**Geography:**  
24/7 patrol from Hope to  
Pemberton

**IPDS:**  
83 Community visits

**Becoming a dog member:**  
750 hours of training

**Commitment:**  
Five years



# Integrated Police Dog Service **IPDS**

**Specialty training** changes from team-to-team but skills are varied

**IPDS is often** called upon to provide support to VIP protection for the Prime Minister of Canada and other dignitaries attending Vancouver and Lower Mainland for various high-profile events.

**IPDS one of the first** units in Canada to be trained in the detection of Fentanyl and Carfentanyl

**Specialty Training:**  
High-risk arrests,  
armed/barricaded suspects

**Specialty Training:**  
Shadow surveillance/VIPs,  
tracking, evidence searches

**Specialty Training:**  
ERT, building searches,  
explosives/narcotics

**Specialty Training:**  
Fentanyl, Carfentanyl, Search  
and Rescue, Human Remains

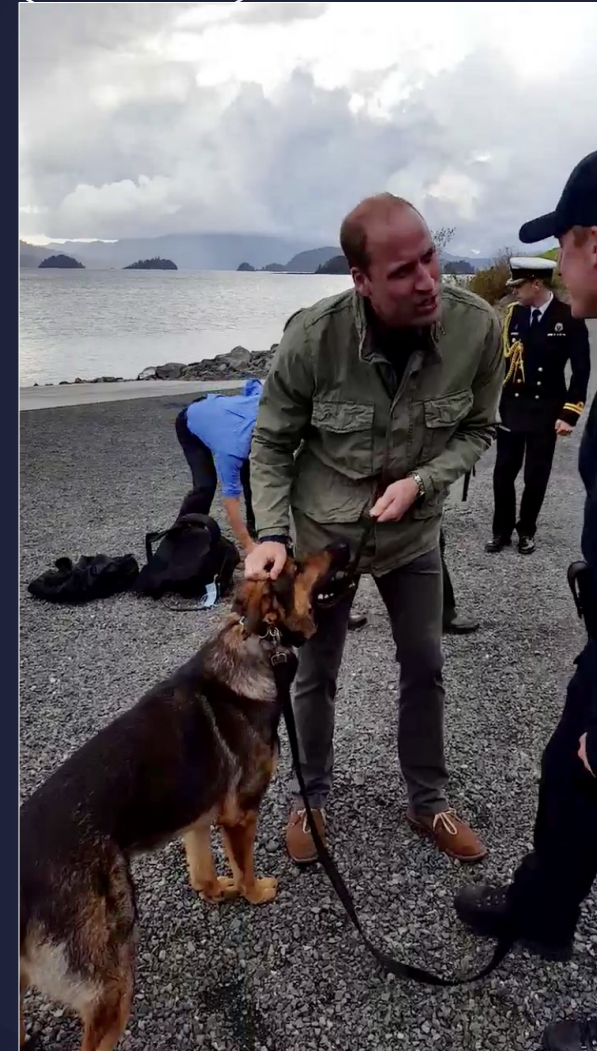
# IPDS – Looking to the future

Cost containment

Specialization

Increased accountability

Transparency







# Integrated Forensic Identification Service **IFIS**

Units in Richmond, Surrey, Langley, Chilliwack, Ridge Meadows, Burnaby and North Vancouver. Municipal agencies include West Vancouver and Delta

55 RCMP Regular Members  
3 West Vancouver Members

Extensive training: 3-6 month assessment, 7 week basic course, 12-18 month apprenticeship, certification board = Specialist

**7 Forensic Units/Labs**  
**58 Regular members**

**9 Forensic Identification Assistants - CMs**

**Forensic Video Analyst Unit:**  
**8 Technicians – MEs**  
**5 Analysts - CMs**

**Administration – 3**  
**Total IFIS staffing: 83**

# Integrated Forensic Identification Service **IFIS**



**All Crime Scenes in LMD**

**Record Scene, photography, Video, 3D scanning**

**Search, collect and preserve evidence**

**Comparative analysis, trace evidence to lab**

Responsible for all crime scene investigations in the 28 communities supported by the RCMP including partnership with West Vancouver

Daily Shift coverage – 0700-2400 hours  
On call 24/7

**White Rock** is served by the IFIS team working out of Surrey Detachment.



# Integrated Forensic Identification Service **IFIS**

Forensic Crime Scene Lasers – one in each unit, portable, trace evidence

UAV – Unmanned Aerial Vehicle – takes aerial photographs & measures large outdoor scenes. LEICA provides 3D scans of scenes

Vacuum Metal Deposition Chamber (VMDC) locates fingerprints and potential sources of DNA on challenging surfaces – 1 in Surrey and North Vancouver

Forensic Search and Evidence Recovery Team (FSERT) Bloodstain Pattern Analyst (BPA) unit, BC Automated Fingerprint Identification System (BCAFIS)

**State of the Art Equipment**

**Forensic Crime Scene Lasers**

**VMDC, UAV, Leica 3D Scanners**

**EDIV  
FSERT, BPA, BCAFIS**



# IFIS - Looking to the future

Increased specialization

Expanding role of forensics

Centralization of Capital costs

Court challenges and admissibility of evidence





# Integrated Emergency Response Team **ERT**



**Responds from Sunshine Coast to Boston Bar, north to Whistler, south to border**

**Operations:  
24/7**

**Access to highly specialized equipment**

**Attends community events throughout the LMD**

**Supplements Coverage:** Three ERTs supplemented by Operational Readiness.

**LMD ERT:** Is the largest such team in Canada

**ERT Mandate:** LMD ERT's mandate is to conduct high-risk police operations or those with that potential



# Integrated Emergency Response Team

## ERT

**Resources:**  
59 police officers, 2 public service employees

**Calls for Service:**  
227

**Response Capabilities:**  
Hostage, armed/barricaded persons, VIP & witness protection

**Response Capabilities:**  
Active threats, covert/rural surveillance, Vertical arrests

**Calls for Service:** LMD ERT attends calls that involve high-risk arrests, high-risk search warrants.

Aircraft and marine intervention capability

LMD ERT historical response to White Rock has had an average number of calls and call types for a Lower Mainland jurisdiction



# Integrated Emergency Response Team

## ERT

**Individual Specialties:**  
Medics, Breachers, Aerial  
Extraction Team

**Individual Specialties:**  
Snipers and Technical

**Team Specialties:**  
Marine, Rural and Tubular  
Operations

**Team Specialties:**  
Chemical, Biological  
Radiological, Nuclear

**Specialties:** LMD ERT has specialist profiles meaning members are individually trained or trained as a team

Training for all aspects of LMD ERT, whether it's as individuals or as a team takes hundreds of hours each year.

**Mandatory Training:** 480 hours





# Integrated Emergency Response Team ERT

**Deployment:**  
Division District Officer  
Critical Incident Commander

**Threshold must be met before  
resources are deployed**

**Could be an ERT Team with  
various specialties depending  
on situation**

**Depending on the situation,  
there could be 30 resources  
working to de-escalate**

Why is LMD ERT deployed to an incident?

To de-escalate high-risk incidents

There are steps required to deploy ERT beginning with consultation with the senior E-Division Officer on call

Consultation will result in the Critical Incident Commander of ERT authorizing deployment.

# ERT - Looking to the future

Increased training

Speciality profiles

Emphasis on de-escalation

Cost containment





## Integrated Collision Analysis Reconstruction Service **ICARS**

**Resources:**  
ICARS operates throughout  
British Columbia

**Capacity:**  
Largest team in the country

**Retention:**  
Members spend many years  
in ICARS

**Resource capacity:**  
3 Senior officers, 16  
reconstructionists

ICARS is **activated** in all fatal collisions and or serious injury collisions where criminal charges are likely

ICARS is **often consulted** when there is evidence to support criminal prosecution

**Hit and run collisions** where additional investigative expertise is required.

**All police-related collisions** involving death or serious injury





# Integrated Collision Analysis Reconstruction Service ICARS

**Responsibilities:**  
Investigates forensic aspect of collisions for serious injuries/death

**Training:**  
Members trained to work with highly-sophisticated technology

**Skills:**  
Require advanced physics and math skills

**Training:**  
Members trained in highway engineering and design

An ICARS officer must be fluent in physics and math in order to conduct highly technical calculations at an accident scene

Members make recommendations to authorities on road design changes to improve traffic safety

Officers provide expert opinion evidence on collision causal factors



## Integrated Collision Analysis Reconstruction Service **ICARS**

**Technology:**  
3D Laser scanners,  
accelerometers, I/TS imaging

**Technology:**  
UAV's, aerial photogrammetry,

**Technology:**  
CAD software, digital stereo  
microscope

**Technology:**  
Crash data retrieval systems,  
load cells, weigh scales

**Equipment:** ICARS requires highly specialized equipment for reconstruction and analysis of collision scenes

# ICARS – Looking to the future

Increase interface with municipalities/province

Increasing reliance on ICARS expertise

Expansion of skills to complement IFIS and other I-TEAMS

Technological innovation VR, 3D







# Integrated Homicide Investigation Team

## IHIT

**Today's capacity:  
110 employees**

**Established 2003: Seamless  
approach to homicide  
investigations**

**BC Government requested  
plan for integration**

**Phased implementation with  
RCMP detachments then  
independents**

### **IHIT Resources:**

IHIT has 110 employees which includes 80 police officers, 14 civilians, 16 administrative

**IHIT established in 2003:** District-wide to facilitate consistent service by skilled investigators. Integration came at the request of BC's Solicitor General

**RCMP Mayor's Forum was** instrumental in the establishment of IHIT.



# Integrated Homicide Investigation Team

## IHIT

**Teams: Seven  
investigative teams**

**Cold Case Team:  
Reviews/prioritizes with  
solvability**

**Support Units:  
Interviewing/witness  
management, file  
coordination**

**Support units: Search  
warrant, criminal analysts,  
surveillance**

### **IHIT – How it works:**

There are seven investigative teams that respond to new files and maintain ongoing investigations

IHIT has several support units required to get a case to court

**Jordan** case has resulted in new deadlines by the BC Crown Prosecution Services



# Integrated Homicide Investigation Team IHIT

**IHIT deployed, as of  
Dec. 2, 2019:  
35 homicides**

**2019 YTD:  
26 charges laid**

**Majority of homicides are  
non-organized crime**

**2019 YTD:  
15 convictions**

## **IHIT Calls for Service:**

IHIT has taken 680 files since its inception including homicides, sudden deaths, missing persons where foul play is suspected

**In 2019 YTD:** 2 Organized Crime (OC), 1 suspected O/C and 8 undetermined.

**Culpable homicides as of Dec. 2:** 35 homicides in 2019 compared to 38 YTD 2018, showing a 9% decline from the previous year





## White Rock file Integrated Homicide Investigation Team IHIT

**White Rock: 1 homicide  
since inception of IHIT**

**Homicide files often require  
assistance from one or more  
Integrated Teams**

**One homicide  
non-organized crime**

**Most recent deployment to  
White Rock: August 2014**

### City of White Rock:

IHIT has deployed to one homicide,  
cleared by charge

White Rock homicide was categorized  
as non-organized crime

# IHIT – Looking to the future

Legal thresholds - Jordan

Employee health and wellness

Increased internal  
legal expertise and strategy

Potential increase to establishment





# Performance & Operations Support I-TEAMS

Created in 2019 – Oversight of ICARS, IPDS and Integrated Internal Investigator including:

**Strategic Planning:** Helping guide the path forward

**Performance Management:** Risk analysis and mitigation, operational feasibility and financial efficiencies

**Employee Health and Wellness:** Ensuring our people are receiving the support needed

**Performance & Operations Support Officer Inspector**

**Enhanced Accountability**

**Risk Mitigation**

**Operational & Administrative Efficiency**



**Closing remarks  
C/Supt. Edwards**

**Questions ?**

